

INTRODUCTIONS

1. Designed to meet globally accepted IEC publication 320 Class 1, that allows users to comply with industry standard in power entry requirement.
2. Connector for cold condition, with pin temperature 70°C max.
3. Nickel-plated brass pins and soldering terminals.
4. SK-1015-STD solder lug mount panel thickness: 1.0mm / 0.04 inch.
 SK-1015 (F1.0) fast-on lug mount panel thickness: 1.0mm / 0.04 inch.
 SK-1015 (F1.3) fast-on lug mount panel thickness: 1.3mm / 0.05 inch.
 SK-1015 (F1.5) fast-on lug mount panel thickness: 1.5mm / 0.06 inch.
 SK-1016 panel thickness: 1.0mm / 0.04 inch.

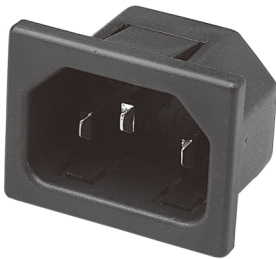
SPECIFICATIONS

1. Rated voltage: 250VAC, 10A/15A
2. Minimum insulation resistance at 500VDC: 10M OHM
3. Dielectric strength (one minute): 2000VAC between pins
4. Flammability class: UL 94V-0

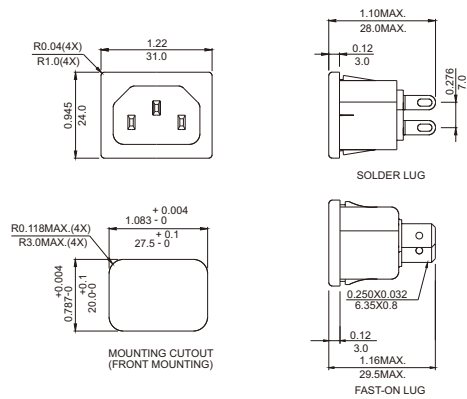
TYPE & RATED CURRENT

DELTA PART NUMBER		SK-1015
RATED CURRENT (AT 250VAC)	UL/CSA	15A
	VDE	10A
CONNECTOR TYPE	MALE	△
UL		✓
CSA		✓
VDE		✓
SEMKO		✓
CCC		✓

MECHANICAL CONSTRUCTION



SK-1015



UNIT: INCH
mm